



Sandringham Cast Iron Bathtub

#2154 | 61" L x 32" W x 23" H
354 lbs, 45 Gallons

Cheviot Products' cast iron bathtubs are handmade in Europe with the finest materials. Fired with a thick coating of AA grade titanium-based enamel for unparalleled hardness and non-porosity, the extremely durable surface is easy to clean and resistant to stains, bacteria and other microbes. Cast iron also keeps your bath warm for the longest possible time.

PLEASE NOTE that this product has a low profile pedestal. #2224 Dual Outlet Drain is recommended.

Rim Configuration

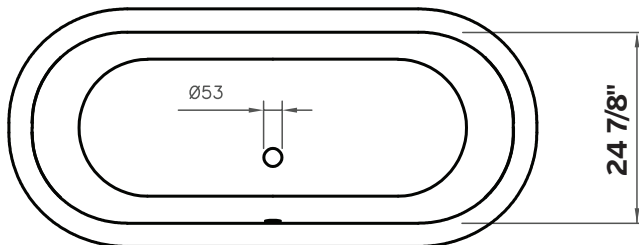
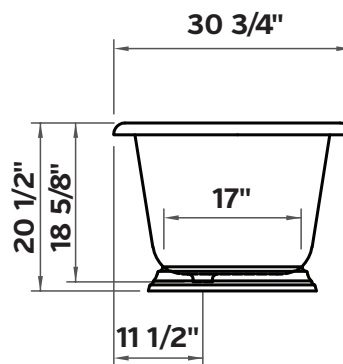
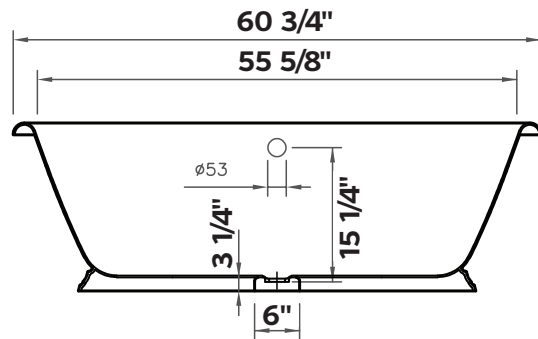
Continuous Rolled Rim

Colours

White Interior & Exterior
White Interior & Custom Colour Exterior

Note

Rough-in dimensions may vary +/- 1/2" and are subject to change. No responsibility is assumed by Cheviot Products Inc. One Year Limited Warranty against manufacturer's defects.



Related Products



#7550 Contemporary
Free Standing
Tub Filler with
Hand Shower



#3970 Heavy
Duty Water
Supply Lines



#2224
Direct Drain Waste
& Overflow



Sandringham Cast Iron Bathtub

#2163 | 70 1/8" L x 31 1/2" W x 23" H
401 lbs, 63 Gallons

Cheviot Products' cast iron bathtubs are handmade in Europe with the finest materials. Fired with a thick coating of AA grade titanium-based enamel for unparalleled hardness and non-porosity, the extremely durable surface is easy to clean and resistant to stains, bacteria and other microbes. Cast iron also keeps your bath warm for the longest possible time.

PLEASE NOTE that this product has a low profile pedestal. #2224 Dual Outlet Drain is recommended.

Rim Configuration

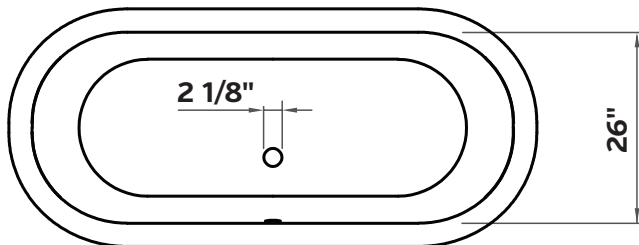
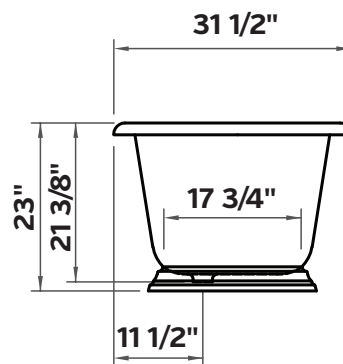
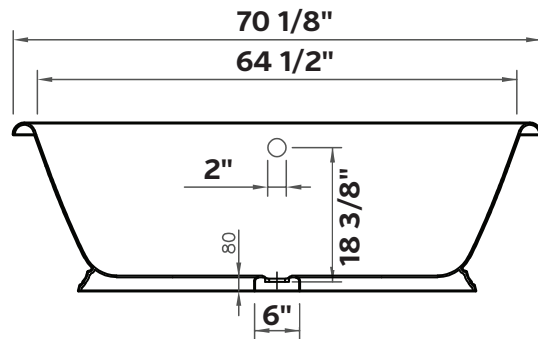
Continuous Rolled Rim

Colours

White Interior & Exterior
White Interior & Custom Colour Exterior

Note

Rough-in dimensions may vary +/- 1/2" and are subject to change. No responsibility is assumed by Cheviot Products Inc. One Year Limited Warranty against manufacturer's defects.



Related Products



#7550 Contemporary
Free Standing
Tub Filler with
Hand Shower



#3970 Heavy
Duty Water
Supply Lines



#2224
Direct Drain Waste
& Overflow