



## Sandringham Cast Iron Bathtub

**#2163 | 70 1/8" L x 31 1/2" W x 23" H**  
401 lbs, 63 Gallons

Cheviot Products' cast iron bathtubs are handmade in Europe with the finest materials. Fired with a thick coating of AA grade titanium-based enamel for unparalleled hardness and non-porosity, the extremely durable surface is easy to clean and resistant to stains, bacteria and other microbes. Cast iron also keeps your bath warm for the longest possible time.

**PLEASE NOTE** that this product has a low profile pedestal. #2224 Dual Outlet Drain is recommended.

### Rim Configuration

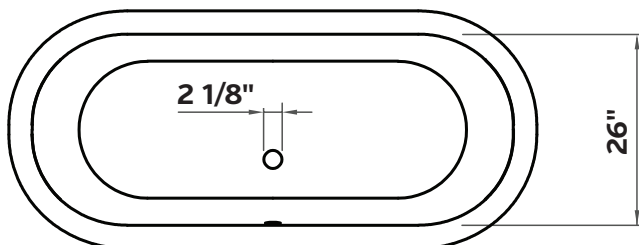
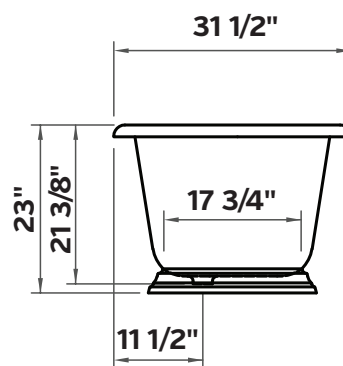
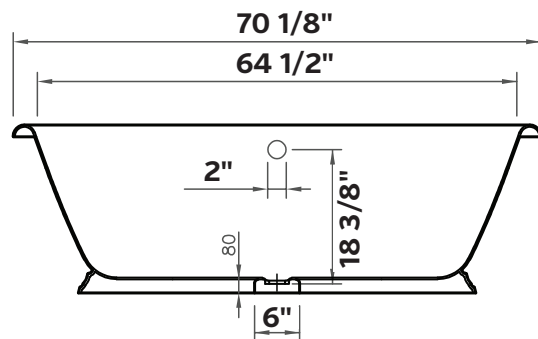
Continuous Rolled Rim

### Colours

White Interior & Exterior  
White Interior & Custom Colour Exterior

### Note

Rough-in dimensions may vary +/- 1/2" and are subject to change. No responsibility is assumed by Cheviot Products Inc. One Year Limited Warranty against manufacturer's defects.



### Related Products



#7550 Contemporary  
Free Standing  
Tub Filler with  
Hand Shower



#3970 Heavy  
Duty Water  
Supply Lines



#2224  
Direct Drain Waste  
& Overflow