

- Constructed with long lasting ceramic disc cartridge and solid brass waterway for years of durability
- Flow Rate: 2.0 GPM / 7.56 LPM Spout: 6" (15.2 cm)
- Includes Pop-up drain with lift rod and lever handles
- Drilled hold size needed for assembly: 33mm-38mm, Max Deck thickness: 1-1/2" (3.8cm), Drain Hole size: 1-1/4" (OD).
- This model meets or exceeds the following codes/standards: ASME 112.18.1 / CSA B 125.1, IAPMO/CUPC, NSF 61-9, AB1953

NO.	DESCRIPTION	Q'TY	NO.	DESCRIPTION	Q'TY
G1	SPOUT	1	G18	VALVE BODY	2
G2	POP-UP ROD KNOB	1	G19	CONNECT HOSE	2
G3	POP-UP ROD	1	G20	CONE WASHER	2
G4	SPOUT BASE O-RING	1	G21	LOCK NUT 1/2"	2
G5	O-RING	2	G22	DRAIN FACE	1
G6	SPOUT FIT WASHER	1	G23	POP-UP FLANGE	1
G7	SPOUT LOCK NUT	1	G24	DRAIN BODY	1
G8	CONNECT TEE	1	G25	BALL WASHER	2
G9	LEVER HANDLE	2	G26	PIVOT ROD	1
G10	SET SCREW	1	G27	LOCK NUT	1
G11	ALLEN WRENCH	2	G28	SPRING CLIP	1
G12	HANDLE BASE	2	G29	ROD STRAP	1
G13	RUBBER WASHER	2	G30	SCREW	1
G14	PLASTIC WASHER	2			
G15	BODY LOCK NUT	2			
G16	HOT CARTRIDGE	1			
G17	COLD CARTRIDGE	1			

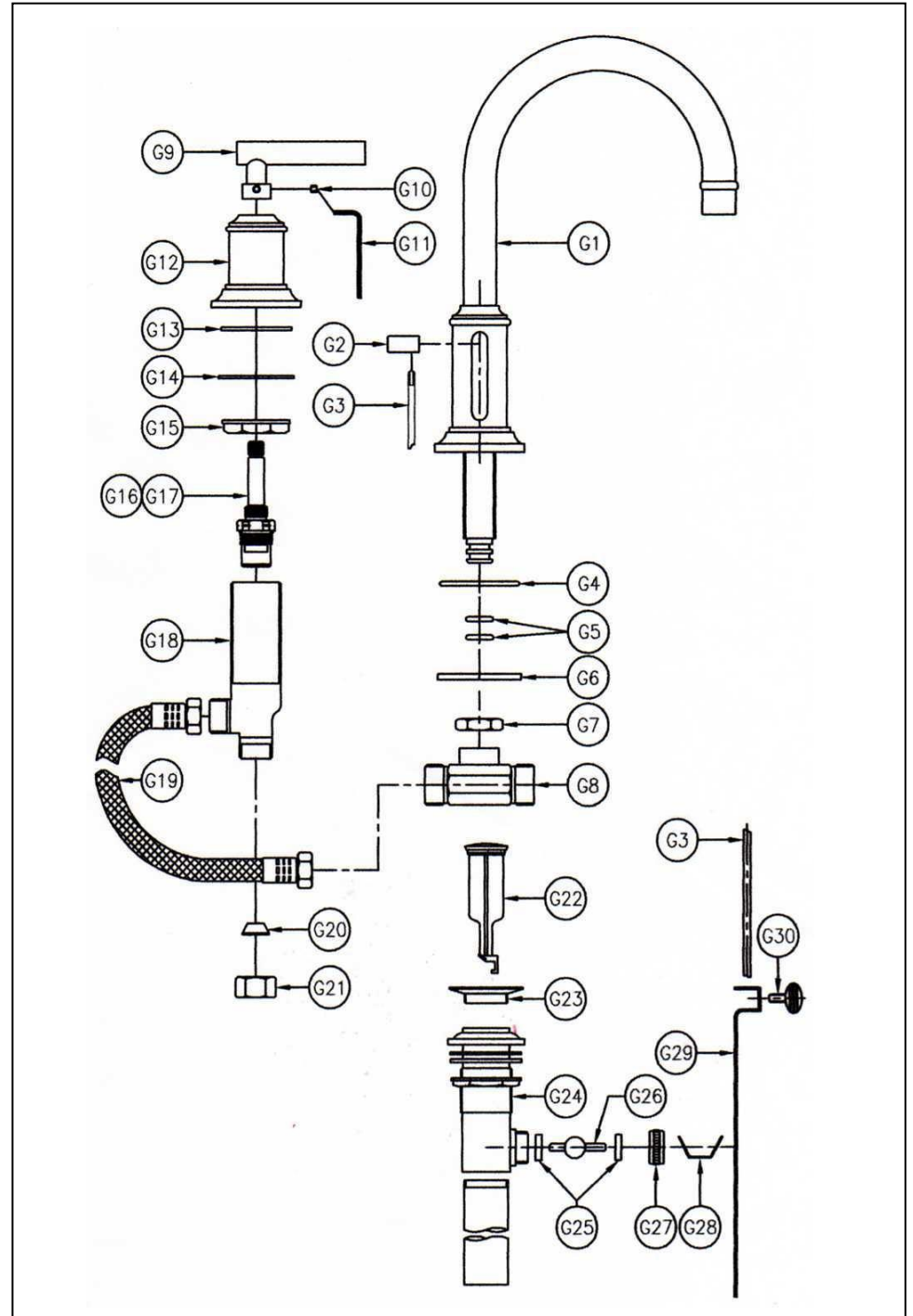
Pre-assembly:

- **Before beginning installation, use the parts list above to identify each of the components included.**

Care: Clean faucet with soapy water and a soft cloth or sponge. Rinse thoroughly with water. Wipe dry. Drying immediately after use helps prevent lime deposits from forming. To protect the finish, do not use abrasive agents or harsh cleansers. If using a cleaning agent, it is best to first test on a small inconspicuous spot before applying solution to entire faucet.

Tel : (800)-444-5969

www.cheviotproducts.com

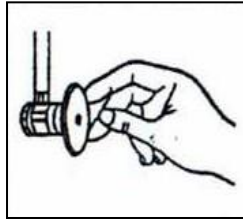


Professional Installation Required

Important Safety Instructions:

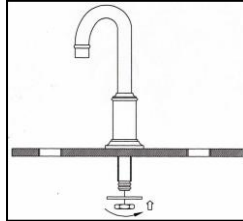
- Please read all instructions carefully and completely before beginning installation.
- Remove all parts and hardware from the box and lay out on a clear workspace, along with any plastic protective packaging.
- Do not dispose of any packaging or contents until assembly is complete to avoid accidentally discarding small parts or hardware.

(1)



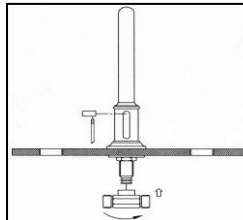
Turn off water supply lines. Remove existing faucet.
Clean area on lavatory sink surface before installing new faucet.
Make sure drain is closed or blocked to avoid small parts falling down to the drain.

(2)



Install new faucet spout assembly into the center hole of the sink.
Align spout (G1). Tighten mounting hardware (G4&5) from underneath the sink.

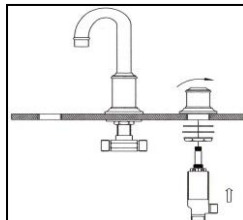
(3)



Screw connector (G7) onto the end of the spout (G1) Stop when it seals.

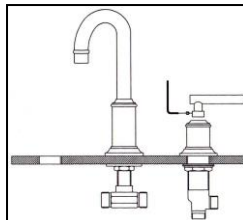
Keep the knob (G2) on the hole back of the spout. Insert pop-up rod (G3) into the hole from the bottom of the spout, then screw with the knob.

(4)



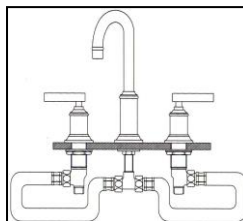
Insert both assemblies (G12~G18) from underneath the sink.
Be sure the hot is on the left side and cold is on the right side. The stem on the left side of the spout (hot) is labeled with a red o-ring, cold side with blue.
Hold the body in proper position; tighten mounting hardware (included) at the top first. Be sure both sides have the same height of threads exposed.
Hand tighten the bottom hardware from underneath the sink

(5)



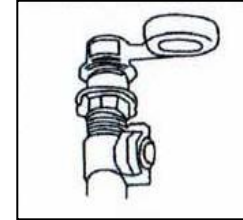
Put lever-handles (G9) on the stem of handle assemblies. Use Allen wrench (G11) tighten the set screw (G10) on the side of handle.

(6)



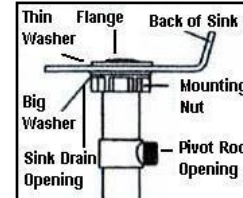
Connect the flexible hose (G19) from the supply shank side port (G18) to the connect Tee (G8).

(7)



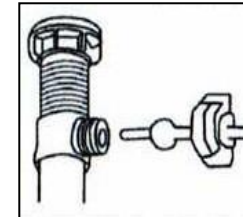
Thread mounting nut and bottom gasket onto drain body (G24).
Wrap top threaded end of the drain body with plumbers' tape.

(8)



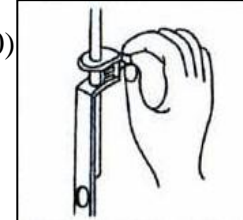
Install drain body (G24) up through the drain opening and reattach the flange (G22&G23) onto drain body, holding the drain body in position with pivot rod opening facing the back of sink.
Tighten the mounting nut by hand.

(9)



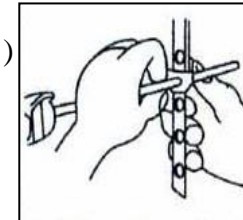
Place pivot rod (G25&26) into pivot rod opening. Slide pivot nut (G27) over pivot rod and thread it on the drain body. Tighten firmly.

(10)



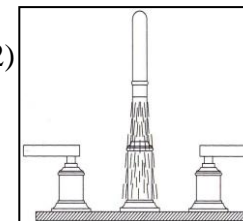
With lift rod in position on the faucet, insert lift rod through lift rod strap (G29) and secure with the clevis screw (G30).

(11)



Guide the pivot rod (G26) through one of the holes on the lift rod strap (G29). Secure it with the spring clip (G28). Adjust the height of the lift rod by resetting the clevis screw.

(12)



Connect the hot and cold water supply lines to their respective supply shank (G18) bottom ports. Remove the aerator. Turn on the main water supply and check for leaks. Allow both hot and cold water to run for one minute. Replace the aerator. Assembly is complete.